

CTA #8930

TORQUE LIMITING RATCHET WRENCH 35Nm

NEW!

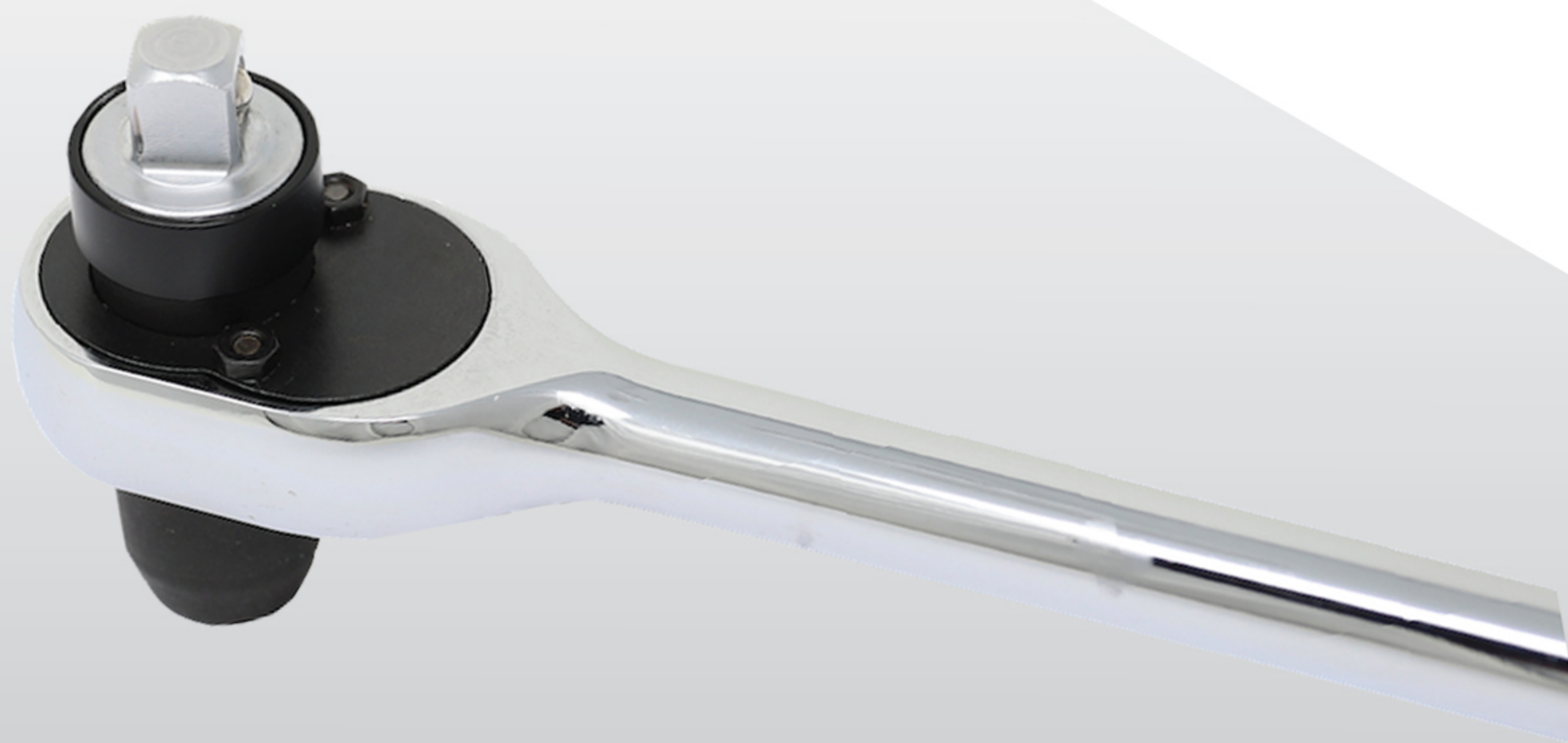


- Use for installing oil filter housing caps with 35Nm (25.81 ft-lb) (309.78 in-lbs.) torque specifications, found in many Asian and Domestic vehicles
- The internal torque limiting device prevents over-tightening of caps when re-installing housing caps

- Soft grip handle and blue color indicates it is for 35Nm (Red handle #8940 is for 25Nm) applications



- Torque accuracy: $\pm 4\%$
- Length: 11.5" (290mm)
- Drive: 3/8"



CTA #8940

TORQUE LIMITING RATCHET WRENCH 25Nm

OIL FILTER HOUSING CAP INSTALLER

Internal torque limiting device installs oil filter housing caps at specific torque specs, preventing over-tightening. 3/8" drive. OAL: 11-1/2" (290mm). Color coded handle for easy identification.



Phone: 1-800-461-0781 • Fax: 1-800-511-6311 • order@completelube.com

10SEPT07-22RL-CTA

**SEE
OVER**



RED LINE NON-SLIP CVT ATF



30804 -Non-Slip CVT-946 mL
12 per case



- Designed specifically for use in metal belt-type Continuously Variable Transmissions including Mini, Nissan and Subaru
- Includes anti-wear additives for improved metal-to-metal protection in torque-converter clutches and offers consistent performance over broad temperature range
- Synthetic basestocks offer improved shear characteristics, improved thermal stability and extended drain intervals (up to 48,000 KMS, follow manufacturers specifications)

RECOMMENDED FOR:

Audi

Multitronic pt# G 052 180 A1/J1,
G 052 516, TL 52180, (01J, 0AW)

Chrysler/Dodge/Jeep
Mopar NS-2/CVT+4 pt#
05191184AA
(Jatco JF011E VT2)

Daihatsu

(XA10 LN) (non US)

Ford/Mercury

Mercon C ® CVT23, 30,
pt# XT-7-QCFT, spec# WSS-
M2C933A, (ZF CFT23, CFT30)

DEXRON, DEX- CVT and Mercon are registered
trademarks owned by General Motors Corp.
and Ford Motor Co., respectively.

GM/Saturn

DEX-CVT®, pt# 22688912,
pt# 15234609
(CVT2/M75, X15F- PTC/M16)

Honda/Acura

Genuine Honda HMMF CVT Fluid
CVTF, pt# 08260-9904, 08200-
9006, 5030119 08798-9018
Multimatic (SZCA, SWRA) and
HCF-2

Hyundai/Kia

SP-CVT 1, Hyundai Genuine CVTF

Mazda

CVTF, Mobil CVT 3320

Mercedes Benz
CVT Fluid spec 236.20, 722.8 pt#
001 989 46 03, Shell CVT Fluid
0282, Fuchs Titan ATF CVT

Mini

Esso CVT EZL 799,
pt# 83 22 0 136 376
(ECVT - ZF CVT VT1- 27T)

Mitsubishi

CVTF-J1, CVTF-J4 (Jatco F1C1,
JF011E, F1CJA, W1CJA , INVECS-III)

Nissan

NS-1, NS-2, NS-3 Nissan CVT Fluid,
pt# 999MP-NS200P (Jatco JFE10E,
JF010E, JF011E)(RE0F09A, B, 10A)

Subaru

NS-2/Linear Tronic CVTF, pt#
K0425Y0710 CV-30, Subaru
Lineartronic CVTF-III, High Torque
CVT Fluid (TF690, TR580, TR690)

Suzuki

TC / NS-2 / CVT Shell Green 1V,
CVTF Green2, (Jatco JF012E)

Toyota/Scion

CVT Fluid TC, FE, pt# 08886-
02105, Non Hybrid (XA10 LN, AXA
15LN) (Super CVT 7-step) K41B

Volvo

CVT Fluid pt# 5344959-6 (ZF CVT
VT1-27T, VT1-13A) (non US)

For health safety information, please refer to the [Safety Data Sheet](#) at [REDLINEOIL.COM](#)



Phone: 1-800-461-0781 • Fax: 1-800-511-6311 • order@completelube.com

10SEPT07-22RL-CTA

SEE
OVER